



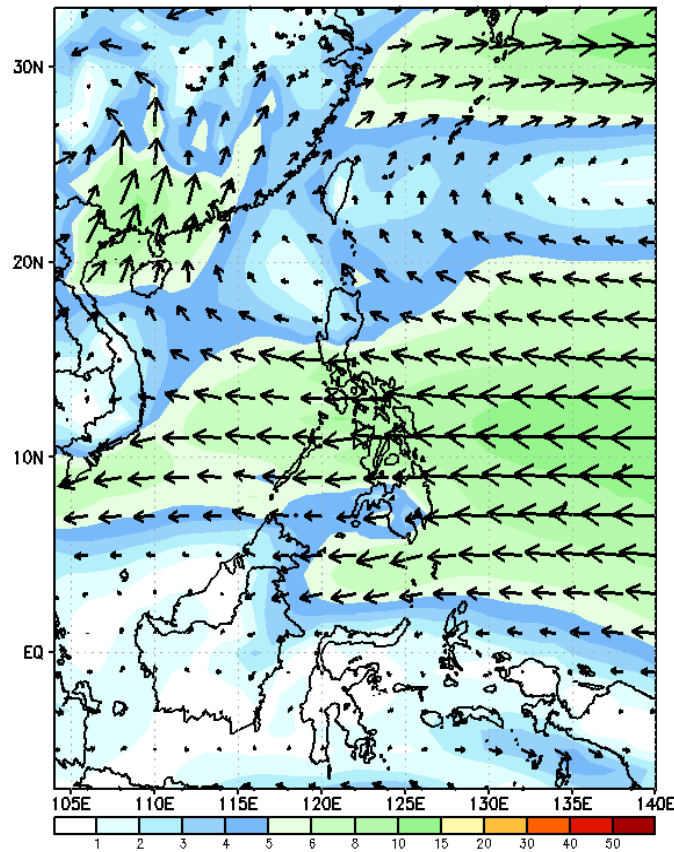
# Week 1 & Week 2 Forecast for the Philippines using GEFS Model



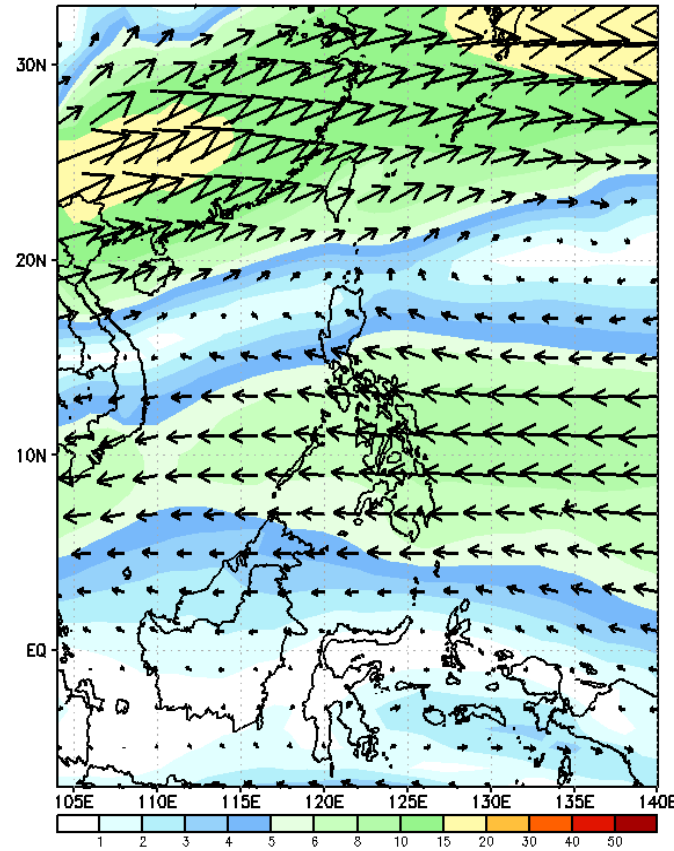
# GEFS Week-1 Wind Forecasts:

Week 1: Feb 28- Mar 06, 2025

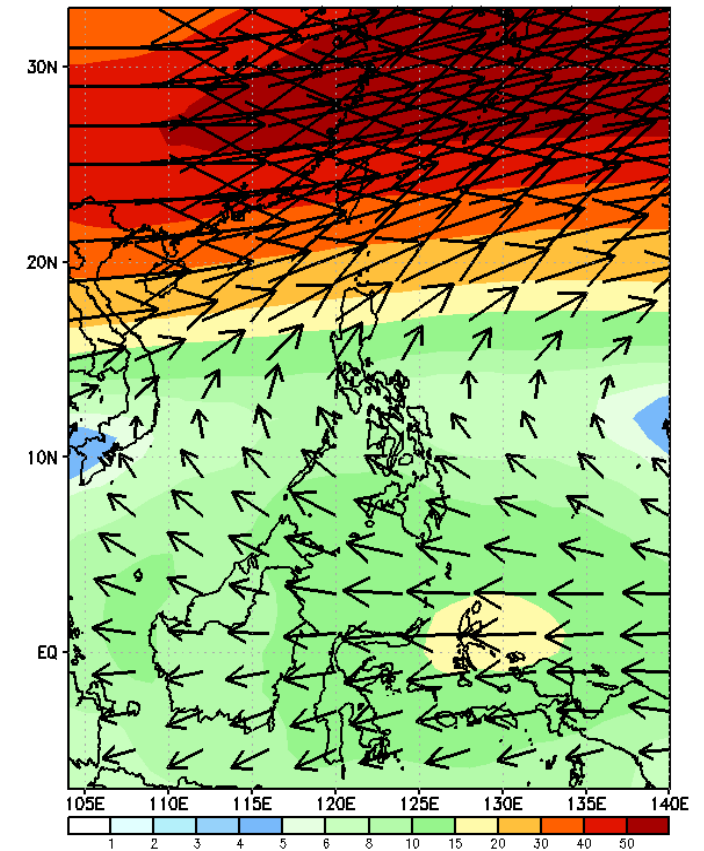
GEFS Week-1 850-hPa Wind Total  
Valid: 20250228 - 20250306



GEFS Week-1 700-hPa Wind Total  
Valid: 20250228 - 20250306

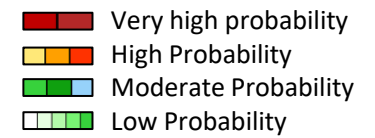


GEFS Week-1 200-hPa Wind Total  
Valid: 20250228 - 20250306



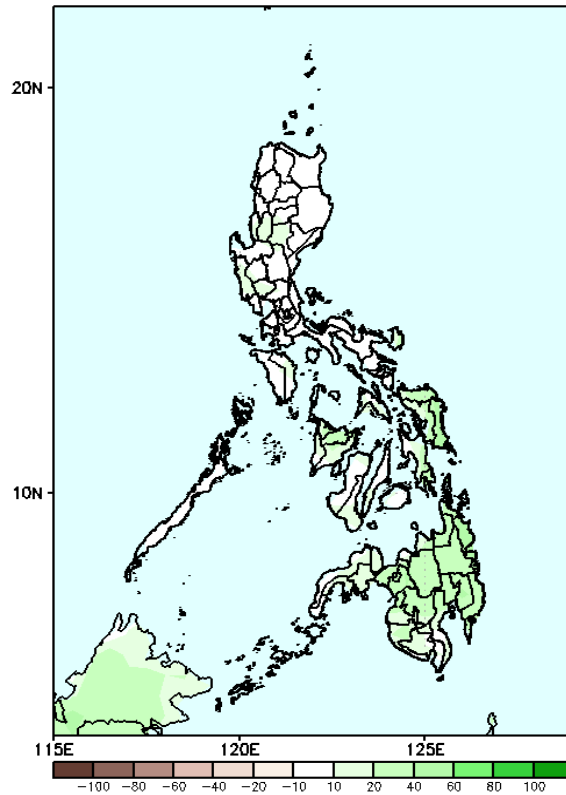
Northeast Monsoon affecting Northern Luzon while Easterlies affecting the rest of the country during the forecast period

# Precipitation Anomaly and Exceedance Probability > 25/50 mm



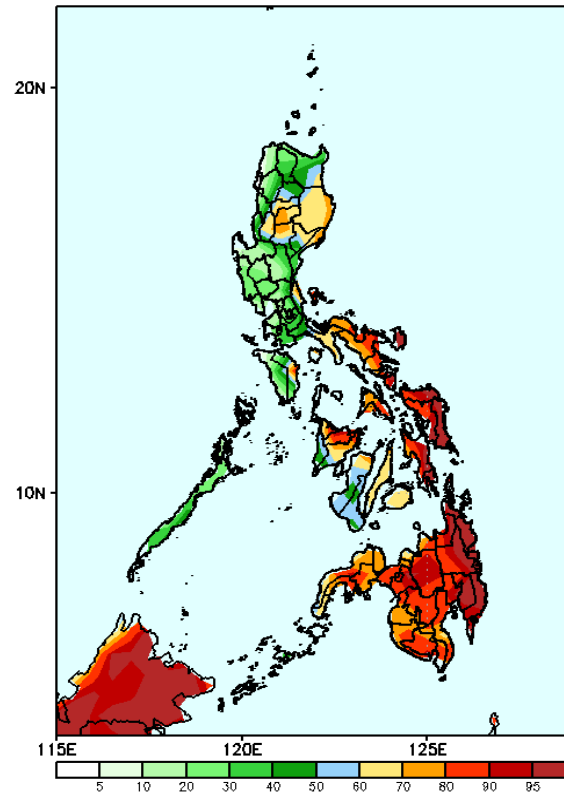
Week 1: Feb 28- Mar 06, 2025

GEFS Week-1 Precip Anomaly  
Valid: 20250228 - 20250306



Increase of rainfall of 20-40mm is expected over Eastern Visayas and Mindanao

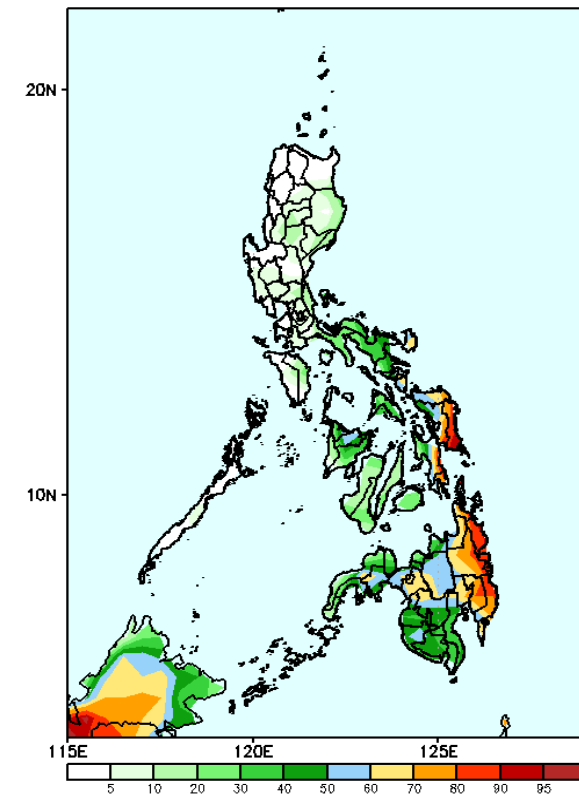
GEFS Week-1 Exceedance Prob. > 25mm  
Valid: 20250228 - 20250306



## Probability to Exceed 25mm

- High to very high over Eastern Samar and Mindanao;
- Moderate to high over most parts Northern Luzon, Aurora, Quezon, Bicol Region and the rest of Visayas;
- Low to moderate over the rest of Luzon.

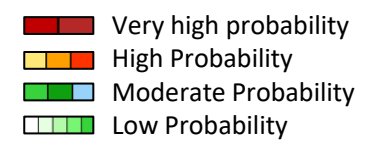
GEFS Week-1 Exceedance Prob. > 50mm  
Valid: 20250228 - 20250306



## Probability to Exceed 50mm

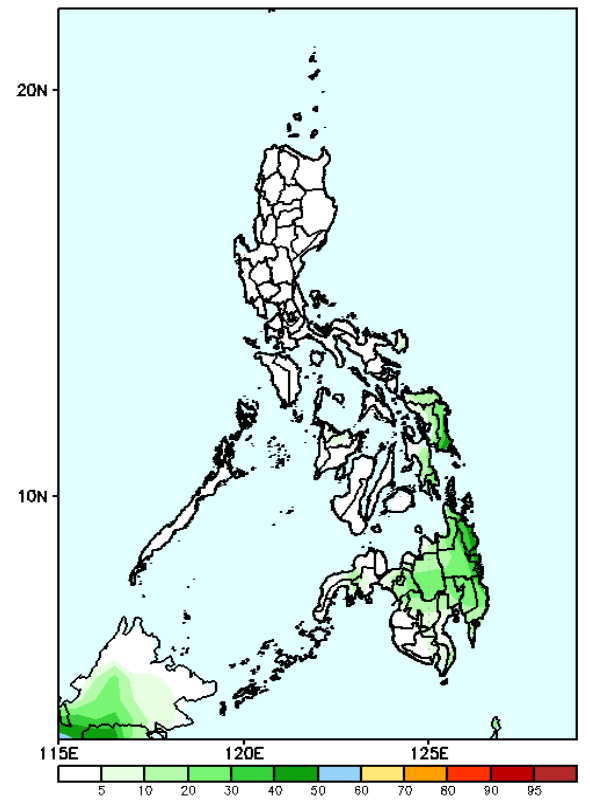
- Moderate to high over Catanduanes, Sorsogon, Capiz, most of Eastern Visayas and most of Mindanao;
- Low to moderate over the rest of Bicol Region and Visayas and the westernmost section of Mindanao;
- Low over the rest of Luzon.

# Exceedance Probability > 100/150/200 mm



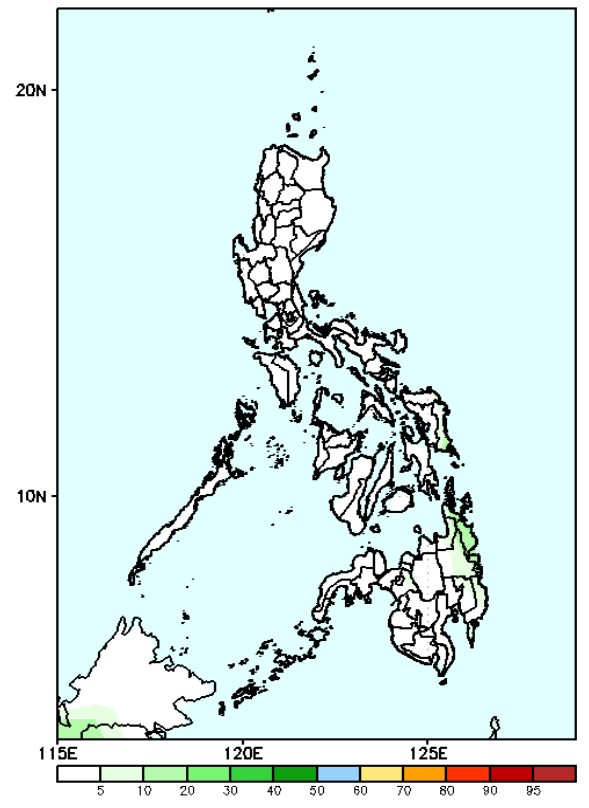
## Week 1: Feb 28- Mar 06, 2025

GEFS Week-1 Exceedance Prob. > 100mm  
Valid: 20250228 - 20250306



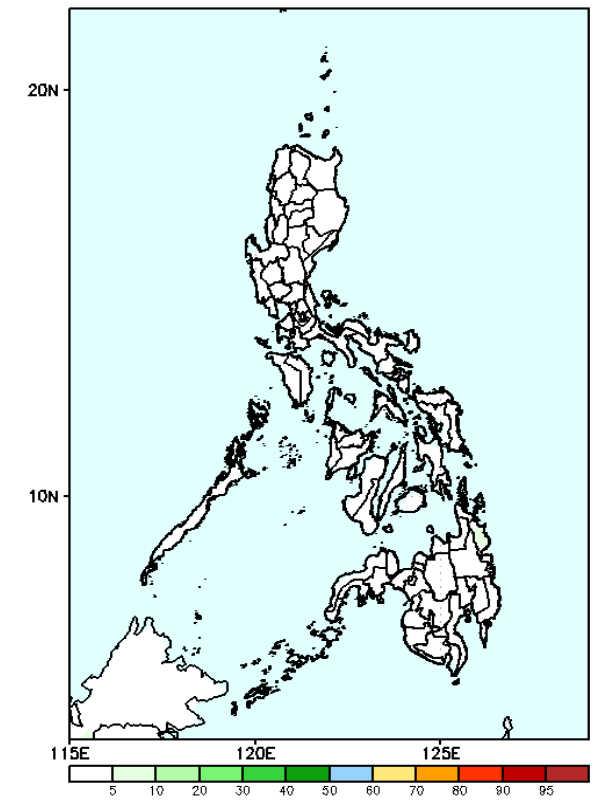
- Probability to Exceed 100mm**
- Low to moderate over Eastern Visayas and most of Mindanao;
  - Low over the rest of the country.

GEFS Week-1 Exceedance Prob. > 150mm  
Valid: 20250228 - 20250306



- Probability to Exceed 150mm**
- Low across the country.

GEFS Week-1 Exceedance Prob. > 200mm  
Valid: 20250228 - 20250306

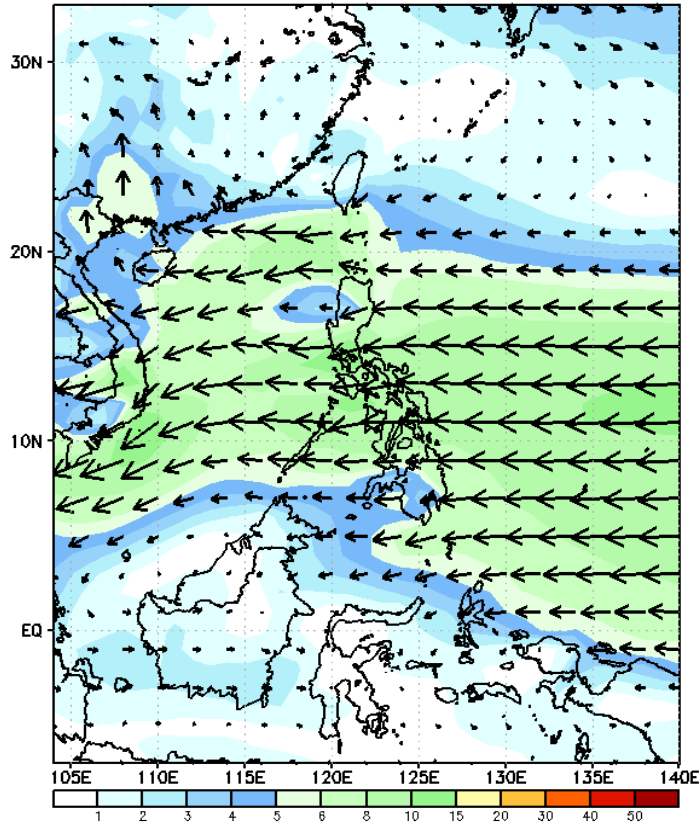


- Probability to Exceed 200mm**
- Low across the country.

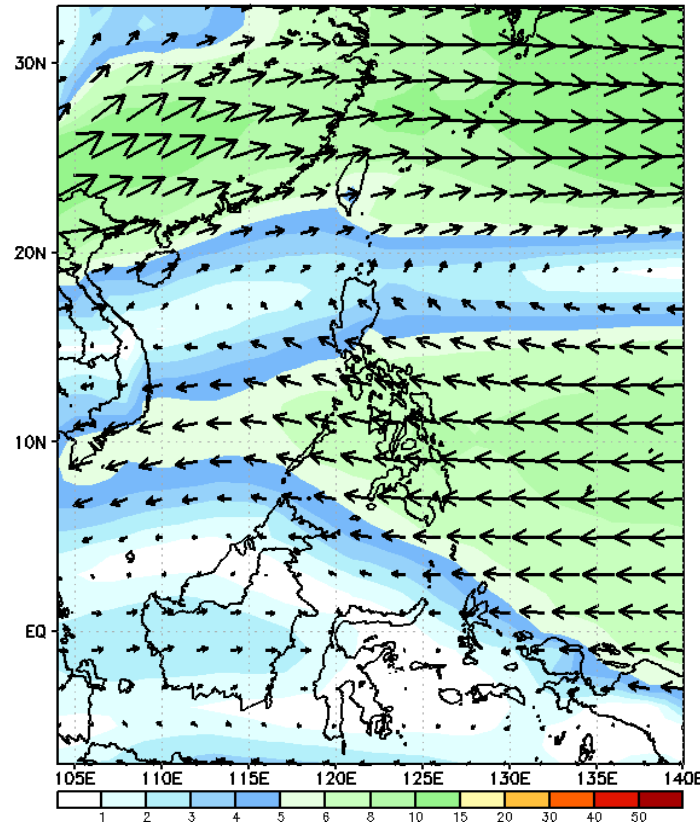
# GEFS Week-2 Wind Forecasts:

Week 2: Mar 7-13, 2025

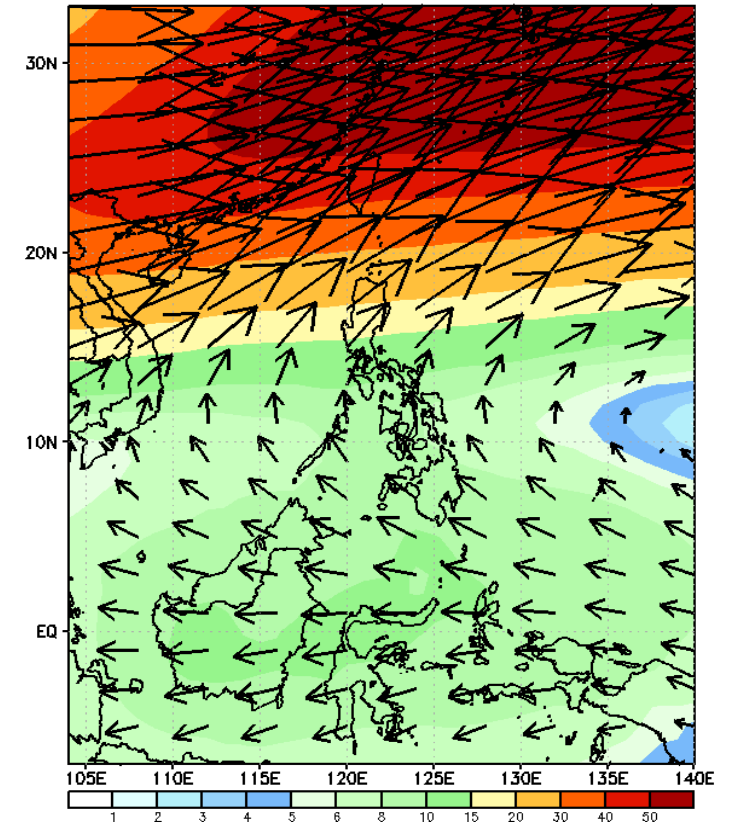
GEFS Week-2 850-hPa Wind Total  
Valid: 20250307 - 20250313



GEFS Week-2 700-hPa Wind Total  
Valid: 20250307 - 20250313

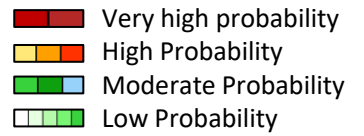


GEFS Week-2 200-hPa Wind Total  
Valid: 20250307 - 20250313



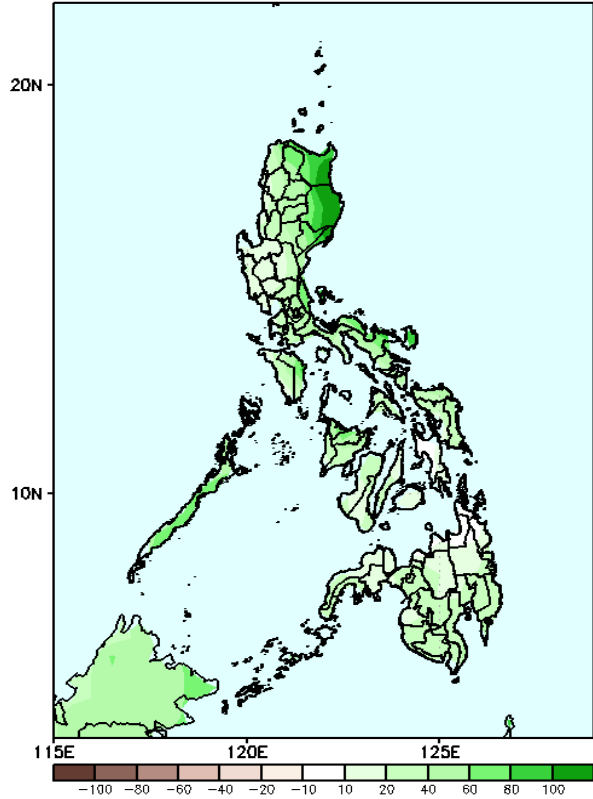
Northeast Monsoon affecting Extreme Northern Luzon while Easterlies affecting the rest of the country during the forecast period

# Precipitation Anomaly and Exceedance Probability > 25/50 mm

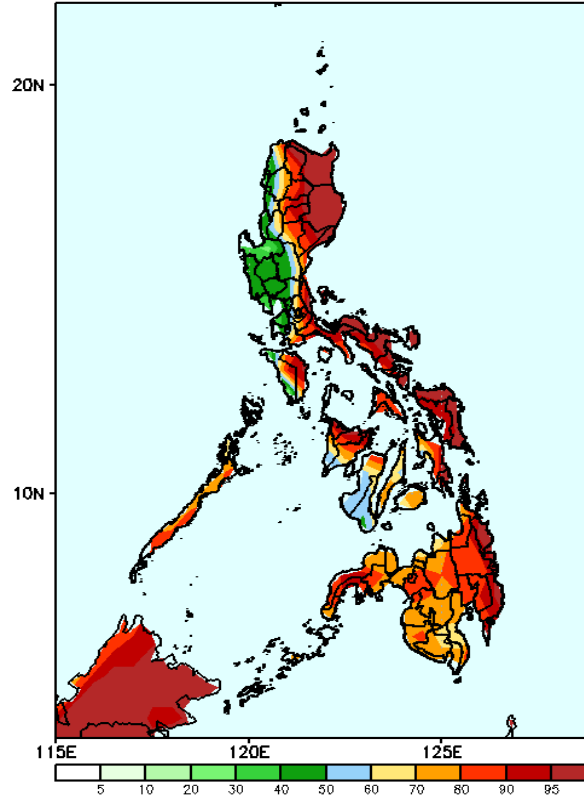


Week 2: Mar 7-13, 2025

GEFS Week-2 Precip Anomaly  
Valid: 20250307 - 20250313



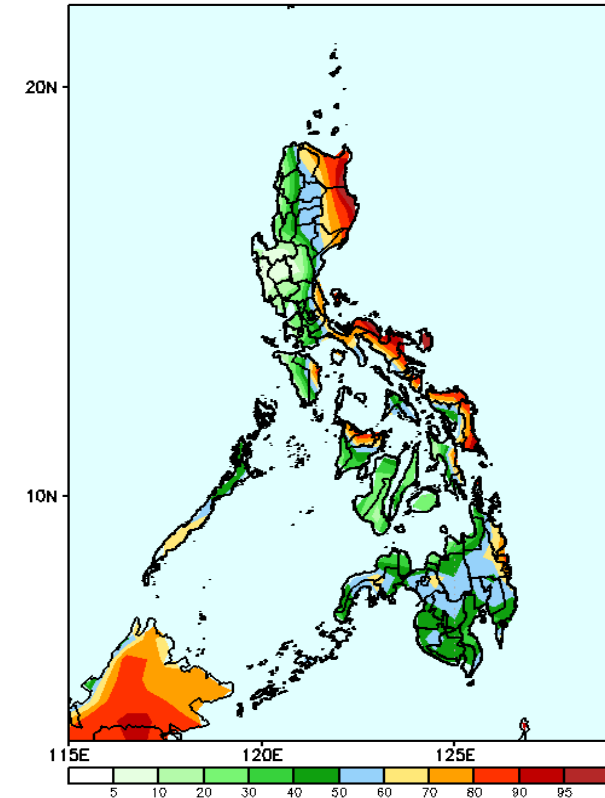
GEFS Week-2 Exceedance Prob. > 25mm  
Valid: 20250307 - 20250313



## Probability to Exceed 25mm

- High to very high over the eastern sections of the country, and most of CAR;
- Moderate to high over the rest of the country.

GEFS Week-2 Exceedance Prob. > 50mm  
Valid: 20250307 - 20250313

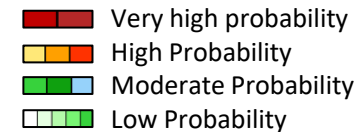


## Probability to Exceed 50mm

- High to very high of the western part of Cagayan, Isabela and the northern section of Bicol Region;
- Moderate to high over CAR, the rest of Eastern Luzon, most of MIMAROPA except for Occidental Mindoro, Western and Eastern Visayas, and most of Mindanao;
- Low to moderate over the rest of Luzon and Visayas.

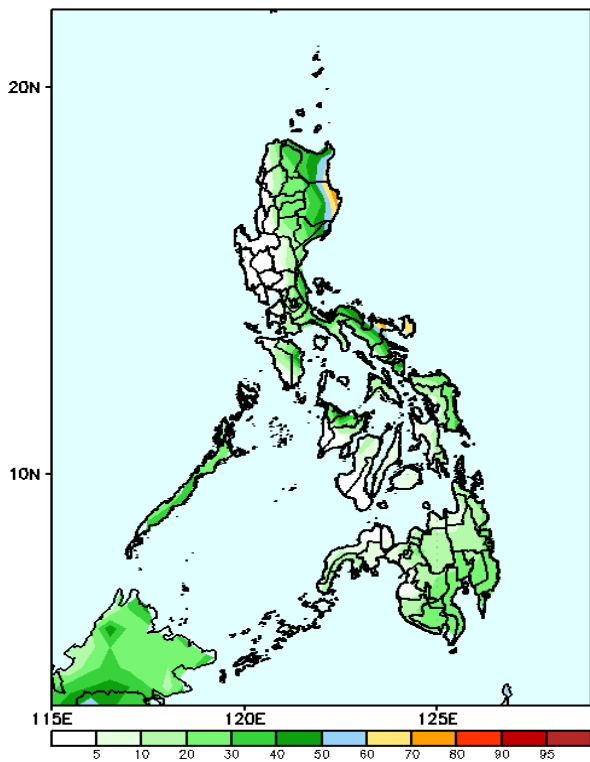
Increase of rainfall of 40-80mm is expected over most part of the country.

# Exceedance Probability > 100/150/200 mm



Week 2: Mar 7-13, 2025

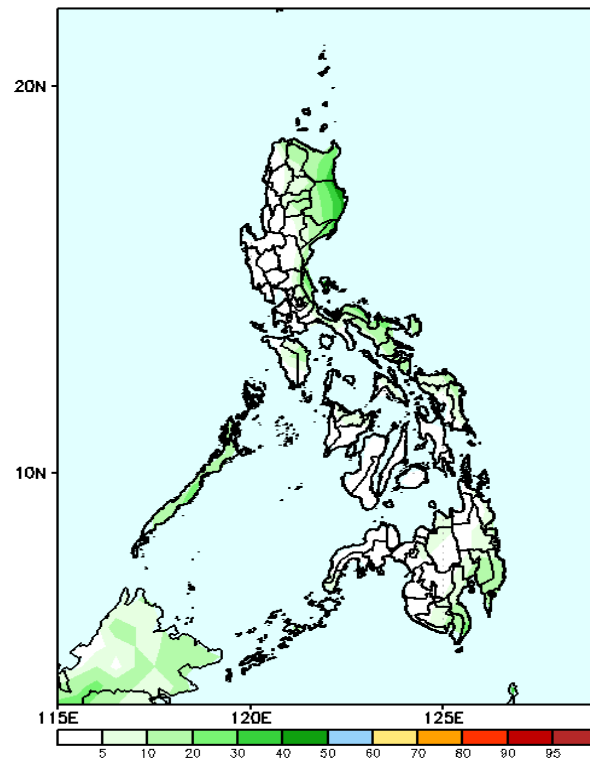
GEFS Week-2 Exceedance Prob. > 100mm  
Valid: 20250307 - 20250313



### Probability to Exceed 100mm

- Moderate to high over the eastern part of Cagayan, Isabela, northern part of Camarines Sur and Catanduanes;
- Low to moderate over the rest of the country.

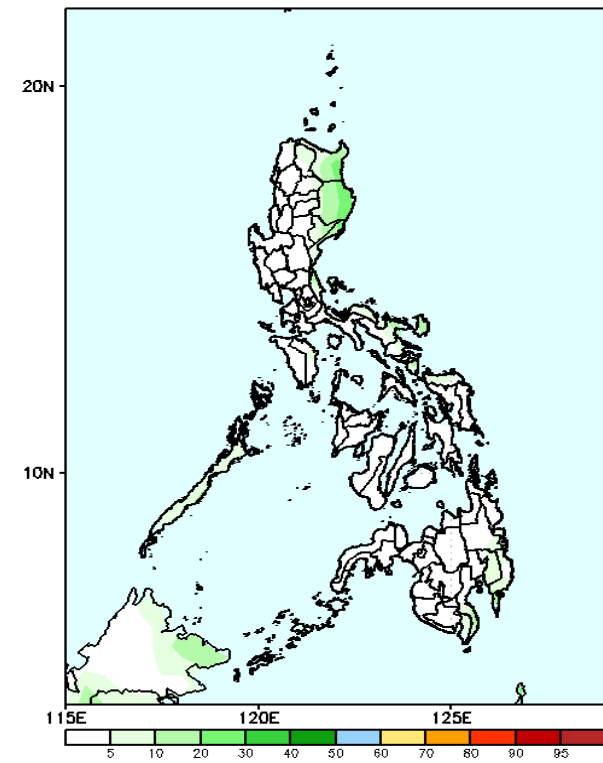
GEFS Week-2 Exceedance Prob. > 150mm  
Valid: 20250307 - 20250313



### Probability to Exceed 150mm

- Low to moderate over Eastern Luzon;
- Low over the rest of the country.

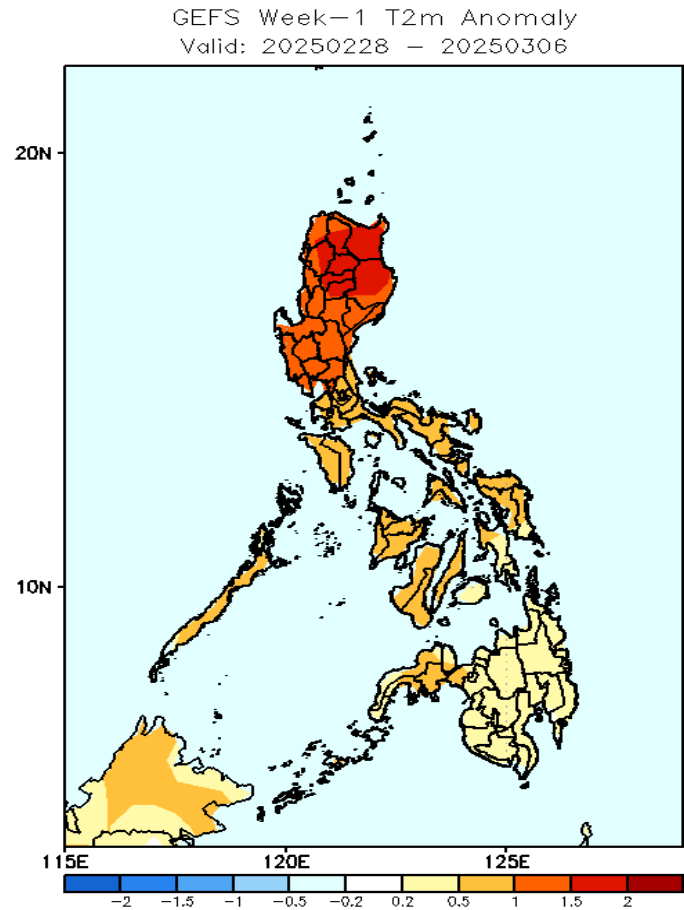
GEFS Week-2 Exceedance Prob. > 200mm  
Valid: 20250307 - 20250313



### Probability to Exceed 200mm

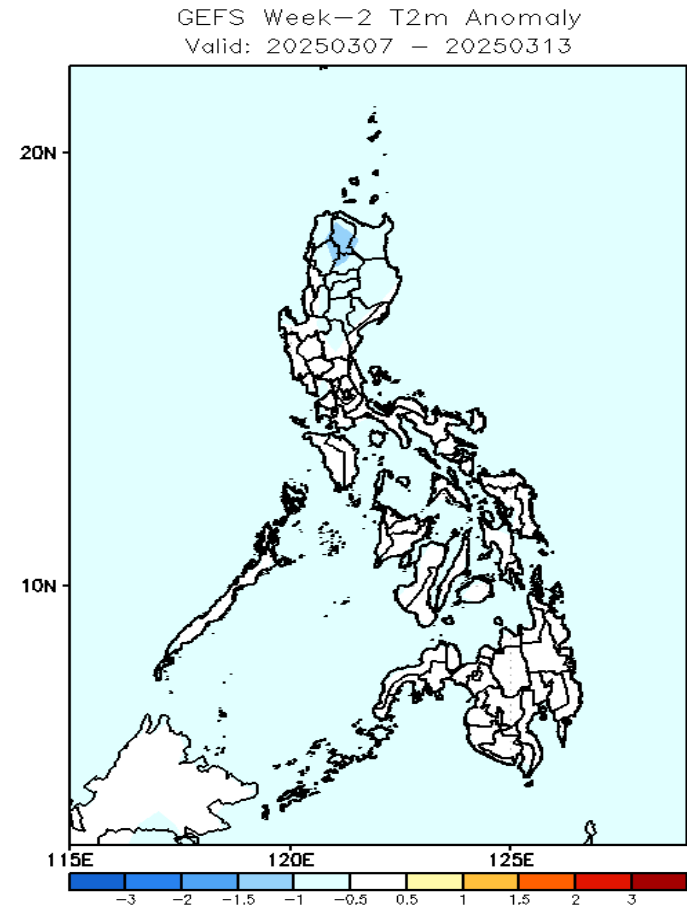
- Low across the country.

# GEFS Week-1 & 2 Forecasts: T2m Anomaly



## 2m Temperature Week 1: Feb 28- Mar 06, 2025

Slightly warmer to warmer than average air temperature will likely be experienced in most parts of the country.



## 2m Temperature Week 2: Mar 7-13, 2025

Near to slightly cooler than average surface air temperatures will likely be experienced in most parts of the country.